

Home > Home And Design Trends > Trending

## TARQ'S RECENTLY CONCLUDED EXHIBITION HIGHLIGHTS QUOTIDIAN SPATIAL NUANCES

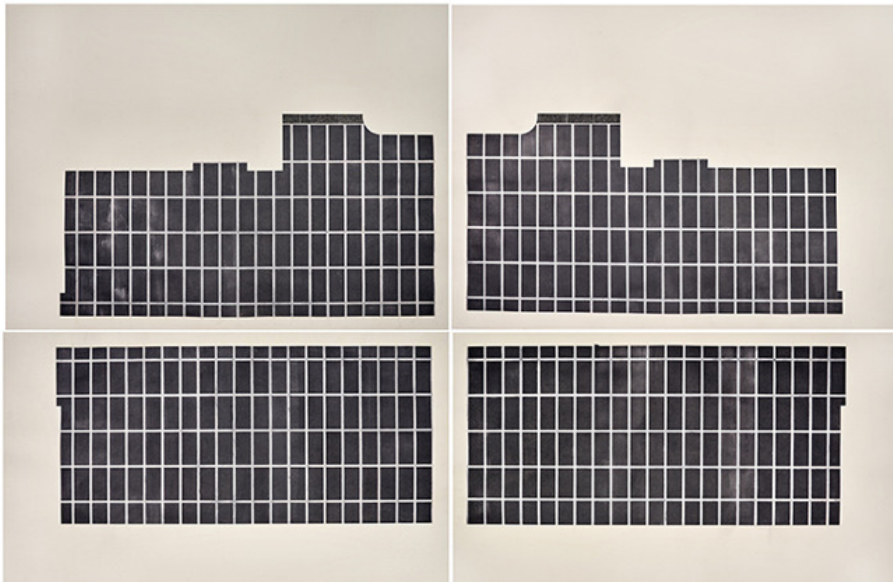
Vishwa Shroff's drawings are a reflection of her observations of her surroundings

BY AVNI RAUT | JAN 11, 2023, 23:22 IST

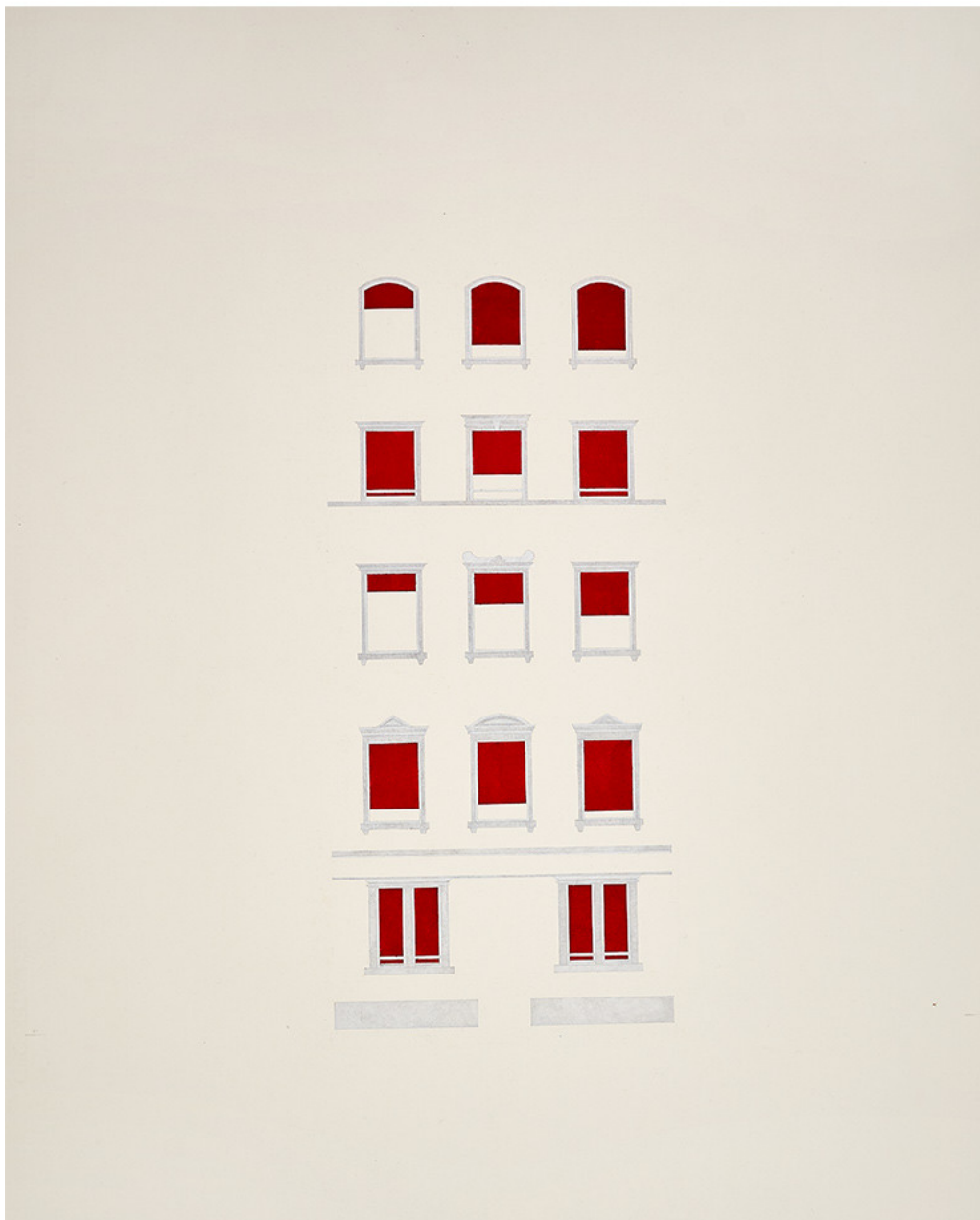
In artist Vishwa Shroff's exhibition titled 'The Music of Buildings', recently exhibited at TARQ, staggeringly detailed drawings beckon viewers to dwell on and appreciate quotidian spatial nuances. Her seemingly simple sketches speak volumes, illustrating exterior and interior nooks and architectural elements of built forms, often depicting spaces she has visited or stayed in. Her works showcased in this show, which also marked her third solo show at TARQ, had been created during her stay in Basel, Switzerland, as a guest of the Stiftung Laurenz-Haus where she was part of an artist residency.



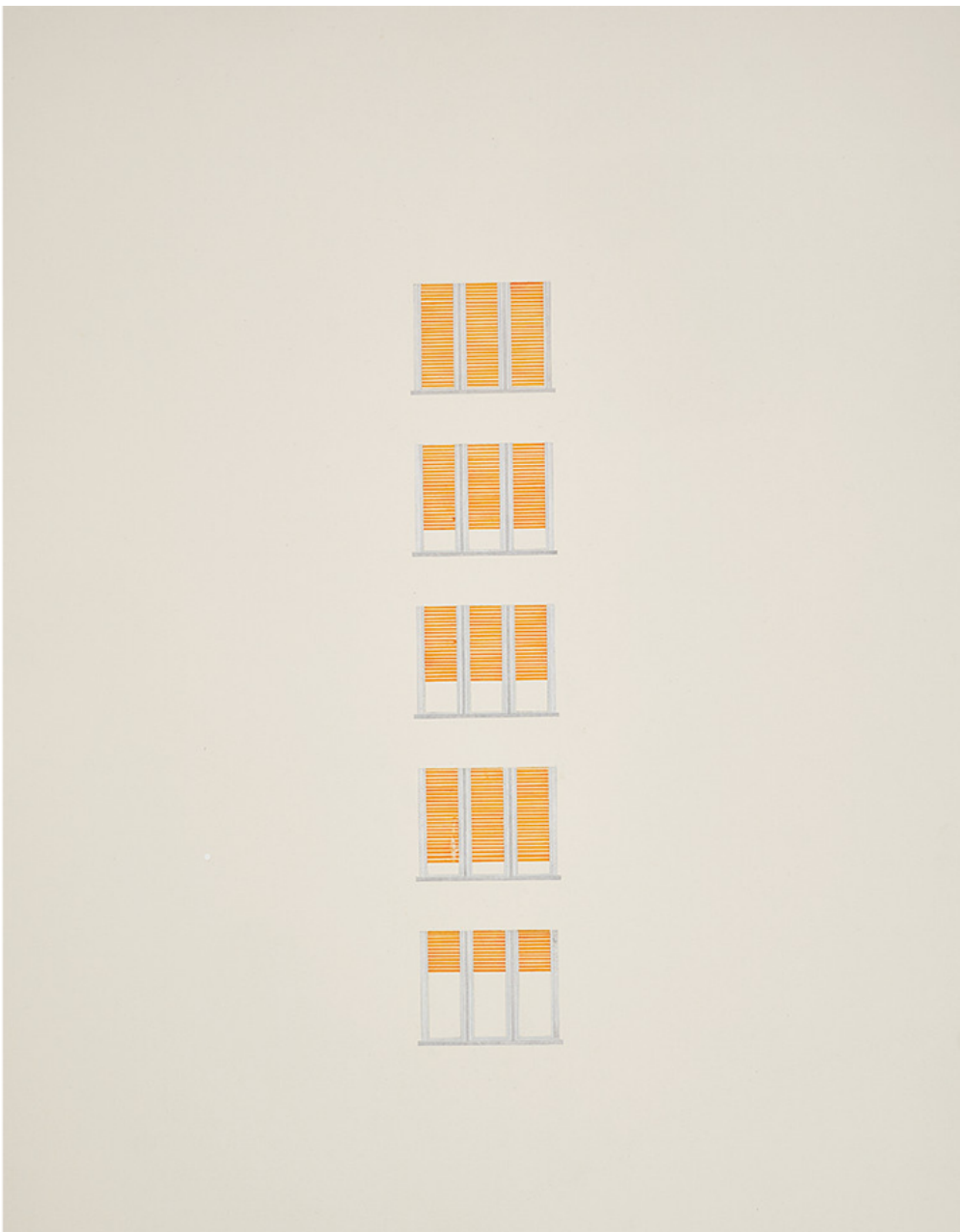
Four steps, 2022 Watercolour and ink on paper. Courtesy of Vishwa Shroff and TARQ



Kunstfloor, 2022 Graphite and silverpoint on paper. Courtesy of Vishwa Shroff and TARQ



Aperture #3, 2022 Silverpoint and ink on paper. Courtesy of Vishwa Shroff and TARQ

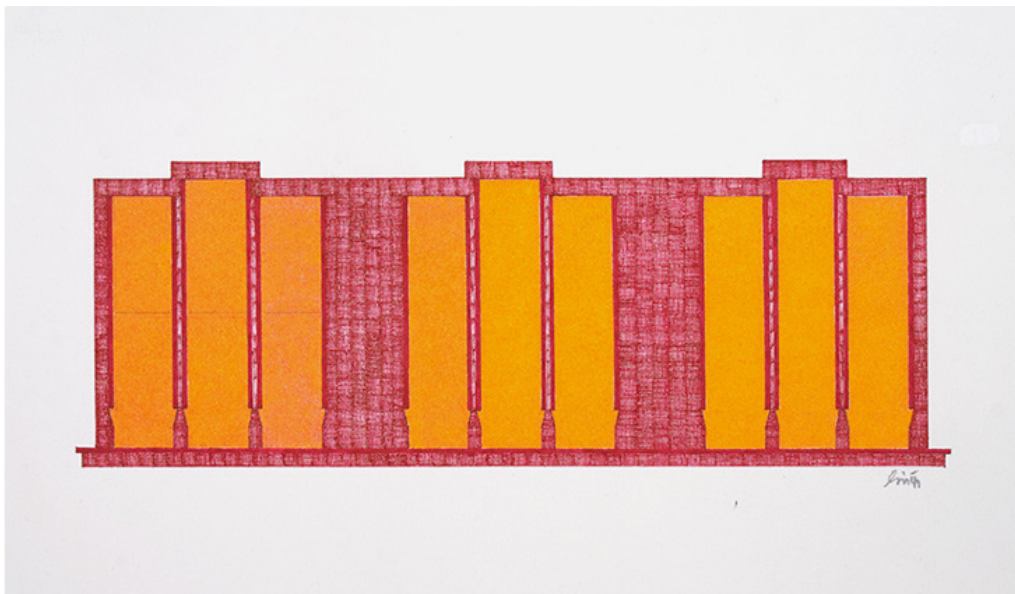


Aperture #1, 2022 Silverpoint and ink on paper. Courtesy of Vishwa Shroff and TARQ

Vishwa wields different mediums to realise her observations on paper, including ink, watercolour, silverpoint and graphite. In most of the sketches, materiality becomes the core focus, often alluding to and capturing intangible aspects such as the lived-in quality a space acquires over a period of time, which she brings forth through meticulous detailing. Her drawings stem from her perceptions and observations of a space, enabling the sketches to go beyond mere documentation to being visual snippets of her journey, allowing the viewer an insight into her experience and most importantly, her memory of them. What remains consistent in all her creations is a certain sense of scale and proportion, emphasizing spatial attributes that otherwise tend to go unnoticed.



Basel Project One (detail #1), 2022 Ink on paper. Courtesy of Vishwa Shroff and TARQ



Basel Project One (detail #2), 2022 Ink on paper. Courtesy of Vishwa Shroff and TARQ



Memoria Manet 6, 2022 Watercolour and ink on paper. Courtesy of Vishwa Shroff and TARQ

Vishwa has been practicing for the last 25 years, and has seven solo exhibitions to her credit, along with her participation in several group exhibitions, workshops, talk series, and artist residencies that have taken her to different parts of the world. Some of her solo shows include Folly Measures (2019) curated by Veeranganakumari Solanki at TARQ, Memories of a Known Place (2012) at Trove Gallery, Birmingham, UK, Drawn Space (2016) curated by Charlie Levine at TARQ, and more, and she has exhibited in group exhibitions in Kolkata, Vadodara, Delhi, New York, London and Stuttgart in Germany.

Related Tags: [TARQ](#) [Vishwa Shroff](#) [Basel](#) [Switzerland](#)

[Stiftung Laurenz-Haus](#)